



MINISTRY

Today we welcome as our guest preacher the Rev. Julie Nelson. Julie is a member of our parish who was graduated from seminary this spring and ordained yesterday. Congratulations, Julie! We welcome her today and wish her well as she leaves our parish to become associate rector at St. Martin's in-the-Field in Severna Park, Maryland.

We are deeply blessed—each of us—with a capacity to discover our gifts and serve others. Sometimes we serve alone. We alone, for instance, may know of someone to whom we can listen, or care for in a unique way, and we do that. But some things are just too important to do alone. Great ministry flows out of community, and people partnering together. When people grow in faith together and use their gifts collaboratively, sparks fly: the Holy Spirit shows up. And we discover along the way that we can do together much more than we can do alone.

My dream for St. Timothy's is that we see how God has called us to join him in his mission in our world. And in seeing how He has called us together collaboratively, we do the same with one another. We can grow in faith while we grow together in ministry according to our gifts. For to do one or the other is to miss the greatest gift we have: one another.



WELCOME TO ST. TIMOTHY'S

We are glad that you are here. Newcomers and guests are welcome to use the "connection card" enclosed in this bulletin to learn more about our community, ask questions, or make comments. Please place the card in the offering plate, or hand it to one of the clergy at the door as you leave worship.



WELCOME TO ST. TIMOTHY'S

If you are new, a visitor, or a guest today, we are honored to have you worship with us. After the service please join us in Edwards Hall (located off the courtyard) for coffee.

If you are interested in joining our church, please call the church office or email our Rector, The Rev. Nathan Speck-Ewer, at nathan@sttims.org. He will be glad to meet with you and talk about the church or direct you to those who might assist you. Arrangements can be made for baptism of adults and/or children on the first Sunday of each month.

THE CLERGY

Nathan Speck-Ewer, Rector
Maly Adams Hughes, Priest Executive
Robert J. Seifert, Deacon

THE STAFF

Christina Sudairy, Communications Director
Peter Sammel, Music Director
Joanna R. Shreve, Financial Administrator
Michele Trottier, Facilities Manager
Anne Wilde, Covenant Group Coordinator
Becky Blessing, Youth Coordinator
Jessica Fuller & Joseph Hodgkinson, Parish Hosts
Helen Wooldridge, Preschool Director

THE VESTRY

| | |
|--------------------------|-------------------------|
| David Foster, Sr. Warden | Paul Hayter, Jr. Warden |
| Ross Johnson | Sandy Watkins |
| Darlene Frick | Lianne Mintz |
| Jenny Nathan | John Heltzel |
| Christopher Paul | Madeleine Gerdes |
| John Ezell, Treasurer | Lavonne Bieber, Clerk |

SEVEN MARKS OF A DISCIPLE

At the heart of this parish is God's call and challenge to be disciples of Jesus. The seven marks of a disciple are:

1. One who witnesses to an intentional faith as modeled in the Baptismal Covenant. (*Book of Common Prayer*, pg. 304)
2. One who keeps the Sabbath and commits to attending worship every Sunday.
3. One who honors the tithe as the biblical standard of faithful financial giving to the Church.
4. One who prays and reads the Bible daily.
5. One who participates regularly in a Covenant Group as a means of personal support in community.
6. One who uses his/her spiritual gifts in the work of the upbuilding of the Church.
7. One who reaches out to others with the love of Christ.

If you are interested in these Christian practices, or would like more information, please see Maly.

OUR MISSION STATEMENT

St. Timothy's Church calls people to unity with God and empowers them to thrive in our changing world. We are a Covenant Community that shares the love of God and proclaims the Gospel of Jesus Christ in word and deed. We provide opportunities to make a difference in the world.

GENERAL ANNOUNCEMENTS

NEW SERMON SERIES

Beginning next Sunday:



COME TO DINNER



Join us for dinner this week. It's a great way to meet people and get connected.

Parish dinners begin at 6:00 p.m. every

Wednesday evening, following "Kid Music" with Peter Sammel.

"Kid Food" and a vegetarian option are always available. The cost is \$7.00 for adults, \$4.00 for children, and a \$25.00 maximum per family (including parents and children under 18).

Please join us for great food and fellowship.



A NEW LITTLE BOY IS ABOUT TO JOIN OUR COMMUNITY!

Please join us today at 2:00 p.m in Edwards Hall for a baby shower to celebrate with April Speck-Ewer, as she and Nathan prepare to welcome their son.

All women from the parish are welcome.

To R.S.V.P., or if you would like to contribute to a group gift, please contact Christine Foster at (650) 567-9755 or foster81@pacbell.net.

WANTED: FRIENDLY FACES

If you would like to serve as a greeter or an usher on Sundays, please contact Nan Fuller at janaan.fuller@sbcglobal.net.



GENERAL ANNOUNCEMENTS

ST. TIMOTHY'S EMPLOYMENT ASSISTANCE PROGRAM



St. Tim's is able to help all parishioners, as well as their family members and friends, 18 years or older, who are seeking employment at entry-level through middle management positions. This free service is administered by church members Chuck Utley and Dick Yarp.

Any qualifying person wanting employment assistance should contact Chris Sudairy in the church office at (650) 967-4724 and leave his or her phone number and the best time of day to be reached by telephone. All information provided will be kept confidential.

Can You Help a Parishioner?

Your company may currently have an opening that the parishioner below is qualified to fill. If you know of a hiring opportunity where you work, please call Chris in the church office and refer to Case No. 801.

Industry Analyst Position Wanted

Market research analyst broadly experienced in analyzing and reporting on fundamentals and trends in various industries. Capable of preparing quotes and helping close additional business. Special ability to quickly become an industry expert by collecting information, conducting original research, establishing key industry contacts and reporting on trends and opportunities. Skilled in Excel and Word.

CONTEMPLATION GROUP STARTING AT ST. TIM'S

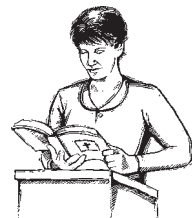
As part of St. Timothy's commitment to expand prayer in our lives, a Contemplative Prayer Group is starting. This is a quiet, peaceful prayer time of brief readings, followed by time for silence and a chance to embrace God's love in our hearts. This short, dedicated time period, which debuted at the Prayer Concert last month, allows us to let go of the stresses of the day and still be home in time for dinner. Please feel free to join us at any time—you are free to come or not depending on your schedule.



If you would like to try it, please come and discern how this practice of making time for God can provide a fresh perspective and renewed energy. The group will meet Thursdays from 5:30 to 6:15 p.m. in the church sanctuary.

LECTORS NEEDED

Lectors are currently being sought for all service times. Readers of all ages are invited to participate.



For more information, please contact Nan Fuller at janaan.fuller@sbcglobal.net.

GENERAL ANNOUNCEMENTS

COMMUNITY CONNECTION
INITIATIVE UPDATE

Here's an in-depth update on what's been happening with our community connection initiative.

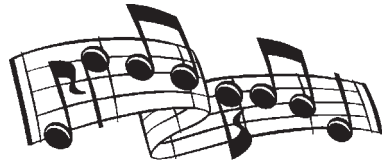


We are forming teams so that we can grow spiritually together as we go in ministry together. An Outreach Resources Team has formed (consisting of Kristin Bromm, Jill Stolarik, and Dave Wilde) to assist others in developing and implementing their outreach ideas. This team will soon be posting information on the St. Tim's web site about service opportunities (single events and on-going) and how to help people get started with their own outreach ministry.

Recent activities include the Empty Bowls fundraiser (coordinated at St. Tim's by Doug Bailey) for the Community Services Agency Alpha Omega Homeless Services Program, providing 22 health kits for people in the CSA Alpha Omega Homeless Services Program (Bill Shreve's covenant group), a mission trip to the La Roca church/orphanage/school in Tijuana, Mexico (coordinated by Pat McCormick), Earth Day Celebration work day, launch of the Employment Assistance Program (Dick Yarp and Chuck Utley), Habitat for Humanity Work Day (coordinated by Roy Hayter), and the Parish Barbeque (an invitational event).

If you have been thinking about getting involved with the community connection initiative, now is a great time. Please contact Dave Wilde at DavidSWilde@aol.com.

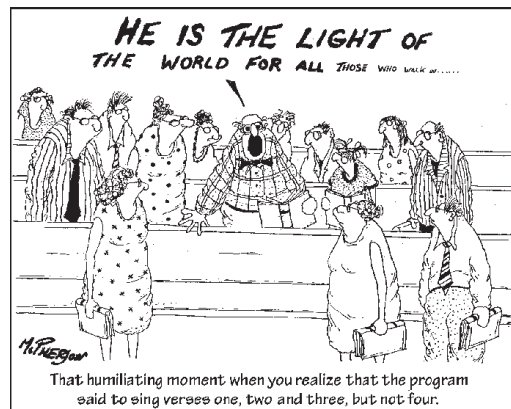
MUSIC MINISTRY



AWAKE, MY SOUL, AND SING

Commonly known as *To be a pilgrim*, today's traditional hymn #564 *He who would valiant be* is based on a poem by John Bunyan from his great Christian allegory *The Pilgrim's Progress*.

Bunyan was born in 1628 in England. He had very little formal schooling, but studied scripture and became a preacher. Preaching Protestantism during the Restoration landed him in jail several times. During one stay, he began *The Pilgrim's Progress*. The work has been translated into dozens of languages and has never been out of print.



CHILDREN'S MINISTRY

VACATION BIBLE CAMP 2008

Vacation Bible Camp starts Monday, August 4. For a whole week, from 9:00 a.m. to 12:00 noon, we will have a Beach Party as we go surfing through the Scriptures. We welcome all children age three and over to Camp, with kids entering 6th grade or older acting as counselors-in-training. Camp fees are \$40 for children age 3-11 and scholarships are available. **Registration closes on July 13.**



For more detailed information or to register online visit www.sttims.org, or pick up a registration form at the back of the church.

KID MUSIC

Parents and children are invited to join Music Director Peter Sammel each Wednesday at 5:15 p.m. for a joyful half-hour of music and rhythm play.



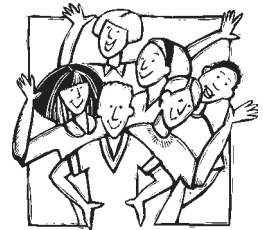
Even the youngest children will enjoy singing simple (and sometimes silly) songs, playing drums and other instruments, and moving their bodies.

Class ends at 5:45 p.m., just in time to enjoy the Parish Dinner.

YOUTH MINISTRY

JOIN THE TWEENS GROUP

If you are too old for Godly Play and not yet ready for Junior High Youth Group, join us for a Tweens Group on Sunday evenings.



We will have time for games, discussion, projects, and a little (or maybe a lot) of Harry Potter.

The Tweens Group meets on Sunday evenings at 6:15 p.m.

BREAKFAST CLUB IS BACK

Come one, come all. Join us from 9:50 a.m. to 10:15 a.m. in the Rector's Office all summer long. Youth ages 12-18 are meeting for refreshments, games, and discussion. It's a fun way to catch up and find out how everyone's summer is shaping up.

See you there!



OUTREACH

NEED HELP? WANT TO HELP?

The St. Joseph the Worker Center was established about ten years ago to provide services to day workers. Folks from St. Tim's have served there in the past, and the need for volunteers continues.



The Center needs people to teach English as a Second Language (ESL) to Spanish-speaking day workers. Hours are daily from 10:00 to 11:00 a.m. and from 12:00 to 1:00 p.m., and from 6:30 to 8:30 p.m. on Wednesday nights.

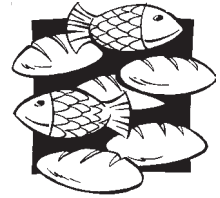
As part of your Summer clean-up, you may need some help around the house. A day worker can lighten your load and help you get jobs finished faster. Workers are available for painting, landscaping, moving, janitorial assistance; garage, window, gutter, and house cleaning; and other skillful jobs.

There is also a need for people who speak Spanish and can teach more advanced aspects of the above jobs.

To help or get help, contact Maria at (650) 903-4102. The Day Worker Center is at 748 Mercy Street, on the corner of Mercy and Hope Streets in Mountain View.

FISHES AND LOAVES

Fishes and Loaves is our hands-on support ministry to families welcoming new babies or facing a medical crisis or other challenges.



This ministry makes God's love tangible by offering practical help such as meals, grocery shopping, playdates, and childcare. It also provides ample opportunity for everyone in the parish to be a blessing to others.

If you can double your favorite recipe and provide dinner to a family, or spare some time to help, contact Annett Inacker-Trail at (650) 988-8042 or annett_trail@yahoo.com.

REMEMBER THE LOVE BASKET

Bring donations of non-perishable food to the Love Basket, located in the back of the church. The offerings are taken to the food bank at SMUM.

Point out the basket to your children when it is brought to the altar with the other offerings, and invite them to help you choose food to put in the basket next week.

Donations of toiletries (including sample or hotel sizes), paper products, and diapers are also very much appreciated.



STEPHEN MINISTRY

STEPHEN MINISTRY
HEALING PRAYER

There is a Stephen Minister available at the side altar rail (near the cross) during communion at each service. If you are experiencing any sort of spiritual, physical, emotional, or relational difficulty, you are encouraged to come forward for healing prayers.



After receiving communion, come to the altar rail to be anointed with oil and receive laying on of hands and healing prayers by a trained Stephen Minister.

Stephen Ministers are also available to pray with people after each worship service. Stephen Ministers wear a blue identification badge.

Prayer concerns are confidential.

If you would like to explore an ongoing one-to-one Christian caregiving and prayer relationship with a Stephen Minister, call the church office, speak with a Stephen Minister, or email stephenministry@sttims.org. The Stephen Ministry Coordinator will meet with you and prayerfully match you with one of the available Stephen Ministers.



STEPHEN MINISTRY

Be kind and compassionate to one another, forgiving each other, just as in Christ God forgave you.

Ephesians 4:32

For confidential Christian care through Stephen Ministry, call 650-967-4724 or email stephenministry@sttims.org.

ABOUT STEPHEN MINISTRY

For more information on Stephen Ministry, including Frequently Asked Questions and Stephen Ministry Healing Prayer, please visit our website, www.sttims.org/community/sm.shtml or email stephenministry@sttims.org.



COVENANT GROUPS

COVENANT GROUP WELCOME WAGON

Last week, at the 10:30 a.m. service, we said goodbye to Nobu, a lovely young woman visiting from South Africa, who could have slipped away unnoticed—but someone noticed her and reached out to her with the love of God. Covenant group leader Susan Slakey listened to the voice of the Holy Spirit and invited Nobu more deeply into our community:

“Invite.” “Welcome.” Two words I’ve heard often at St. Tim’s, especially during the *Outflow* series. I’ve taken these words to heart and try to be more mindful about acting on them. We had a visitor at St. Tim’s. While on a 12-week visiting scholar program at Stanford, Nobubelo Ngandu attended services at St. Tim’s regularly. With the echo in my mind of “Invite.” “Welcome,” I invited her to come to our covenant group. I was surprised when she said she would like to come, but then she went on to explain that her activities were limited to the bus route. (Hmmm... “Invite.” “Welcome.”) So, I offered to pick her up at the bus stop, an offer she readily accepted.

I invited Nobu thinking it was a way to reach out to someone all alone in a foreign country. I was surprised by how much we received in return and how her presence enriched our group. She talked about her faith, hopes and fears, just like the rest of us, but she also



talked about her life and family and friends in Zimbabwe and Cape Town. She broadened our minds and our discussion well beyond St. Tim’s and Silicon Valley. Yet at the same time, we discovered many similarities as Christian Sisters. She served as a reminder that it is our faith that binds us all together. All our other differences are just minor details after that.

During our closing prayer time at Nobu’s last covenant group meeting with us, she tearfully gave thanks for the women in our group, and said our group had made a big difference in her life while she was here, and she questioned if she could have gotten through it without us. Wow. That was a surprise to hear. What did we do? We simply Invited. And Welcomed. I guess it wasn’t as hard as I thought.

Interested in joining a covenant group? Please contact Anne Wilde at AnneAerobic@aol.com for more information.

COVENANT GROUPS

Covenant Groups are an expanding network of small groups that meet together to share the life of faith. To find out more, please call one of the group leaders, or the parish office.

Mondays

1:15 p.m. Anne Wilde (408) 379-2235
& Nan Fuller (408) 736-4662

Tuesdays

Childcare available at church: 9:15-11:30 a.m.

9:30 a.m. Alane Kasrawi (650) 961-6338
& Susan Pimlott

7:00 p.m. Becky Mikkelsen (650) 428-0564

7:00 p.m. Susan Slakey (408) 249-7114
& Jennifer Olsen (408) 733-8735

7:15p.m. Bill Shreve (650) 941-6436

7:30 p.m. Michael Diamond (415) 830-0425
& Dana Peak (408) 299-5798

7:30 p.m. Laura Casellas (408) 375-2822

8:00 p.m. Will Watkins (408) 867-6063

8:00 p.m. Steven Schumaker-Trottier (650) 949-3281
& David Foster (650) 567-9755

Wednesdays

7:15 p.m. Holly Hem (650) 279-8818
Outflow for Young Adults

7:30 p.m. Alan Twigg (650) 962-1939
& Drew Terrill (408) 230-4431

Thursdays

9:15 a.m. Wyn Schuh (650) 965-8037
Rancho Strolling Group

7:00 p.m. The Johnsons (408) 737-8355

7:00 p.m. Nyna Dolby (650) 941-9335

7:30 p.m. Scott Boding (650) 962-1967

Fridays

1:00 p.m. Althea Parks (408) 245-0295

ALTAR GUILD



The flowers today are given
to the Glory of God by

Anne and Dave Wilde

In celebration of their 24th wedding anniversary

Darlene and Nelson Frick

In celebration of their 29th wedding anniversary

and

The St. Timothy's Community

In celebration of the ordination of Julie Nelson

FLOWER DEDICATIONS

We invite you to sign up on the Flower Chart on the back of the front door of the church to have flowers dedicated to a loved one. The dedication might be for celebrating a birthday, anniversary, in memory of someone, or simply in thanksgiving for many blessings.

The suggested donation is \$35, and it is okay to have more than one dedication per week.

Thank you for your support of the Altar Guild.

SERVING TODAY

| | |
|-------------------|-----------------------|
| Dolores Goodman | Altar Guild |
| Jen Ezell | |
| Donna Fuzere | |
| Mary Harrison | |
| Melissa Malley | |
| Claire Witzke | |
| Julie Hansen | |
| Jill Stolarik | Tellers |
| Jennifer Olsen | |
| 7:45 a.m. | |
| Keith Samuel | Greeter |
| Frick Family | Ushers |
| Roy Hayter | Lector |
| Diane Dubois | Eucharistic Minister |
| Doug Merrell | Sound |
| 9:00 a.m. | |
| Casellas Family | Greeters |
| Trottier Family | Ushers |
| Lucas Mendoza | Lectors |
| Bobby Malley | |
| Matthew Mendoza | Acolyte |
| Audrey Wolfe | Prayer |
| Paul Hayter | Eucharistic Ministers |
| Wyn Schuh | |
| Michele Trottier | |
| Parker Schuh | Sound |
| Jordan Wolfe | Projector |
| 10:30 a.m. | |
| Ezell Family | Greeters |
| Wilde Family | Ushers |
| Susan Slakey | Lectors |
| Anne Wilde | |
| Ana Ezell | Acolyte |
| Jill Stolarik | Eucharistic Ministers |
| Tom Stolarik | |
| Tom Bromm | Sound |
| Kris Bromm | Projector |

SIXTH SUNDAY AFTER PENTECOST: PROPER 7

GENESIS 21:8-21

PSALM 86:1-10, 16-17

ROMANS 6:1B-11

MATTHEW 10:24-39

PRAYER LIST

If you have a prayer request, call the church office or email prayer@sttims.org.

Names are kept on the prayer list for two weeks. If prayers are still needed after two weeks, please call or email again.

Please Pray For: Don Agostino; Sherry Delaney; Kate Drew; Terry Field; Ron Holt; The Kohler Family; Dottie Brunauer Levine; Cruz Madrid; Scott Ryan; Ed Sammel; Alan, Tracy and Kate Stevenson; Patricia Urban; the Diocese of El Camino Real and Bishop Mary; the children of La Roca and those who care for them; Stephen Ministers and their care receivers; members of the armed forces, especially Kernen Dibble and Corporal Tony Garibay; and Nancy Livak, serving in the Peace Corps in Belize.

THIS WEEK

SUNDAY, JUNE 22

7:45 a.m. Worship
9:00 a.m. Worship
9:45 a.m. Expressive Arts
9:50 a.m. Breakfast Club
10:30 a.m. Worship
2:00 p.m. Baby Shower for April
5:00 p.m. Worship, Dinner & Youth Groups
6:15 p.m. Book Class—*Reading through the whole Bible*

WEDNESDAY, JUNE 25

9:30 a.m. Bible Study
5:15 p.m. Kid Music
6:00 p.m. Parish Dinner

FRIDAY, JUNE 27

7:30 p.m. Women's Fellowship Meeting

LAST WEEK'S WORSHIP ATTENDANCE

| | |
|------------|-----|
| 7:45 a.m. | 38 |
| 9:00 a.m. | 114 |
| 10:30 a.m. | 72 |
| 5:00 p.m. | 25 |

Finances

| | |
|----------------|-----------|
| Actual income | \$231,713 |
| Pledged income | \$255,664 |

as of 5/31/2008

2008 DATES TO NOTE

August 4-8 Vacation Bible Camp
November 14-16 Women's Retreat
November 29 Advent Festival

SUNDAY SERVICES

7:45 a.m. 9:00 a.m. 10:30 a.m. 5:00 p.m.

Sermon, Communion, Traditional and Contemporary Music.

Nursery care is provided in Room 7 during the 9:00 a.m. and 10:30 a.m. services.

